

# Portable Plating Barrels

When a full size barrel is too much, Singleton Portable Plating Barrels are just right.

A [wide range of sizes](#) allow you to achieve optimum solution transfer and current density for plating a variety of smaller loads, delicate parts or precious metals.

Complete assemblies are furnished with drives and high capacity copper cathode contacts.

Selectable superstructure configurations are available to match existing equipment.

## Portable Plating Barrel Features:

- † [Fuse-Fab®](#) construction, the same as provided on Singleton production barrels
- † [Poly-Ripple®](#) interior panel surfaces prevent smaller parts from sticking, promote tumbling and faster plating
- † Heavy Duty drilled panels: 1/16" to 1/4" diameter perforations available.
- † Alloy clamps or knobs secure the door during processing and resist corrosion

## Fuse-Fab® Construction:

Singleton barrels are made with premium grade, high temperature polypropylene and innovative Fuse-Fab® construction assuring quality and durability. Fuse-Fab® joins sections of plastic material, in a controlled thermal process, creating a single uniform section. The result is a seamless plating barrel with tremendous strength and integrity.

## Steel-Core® Reinforcement:

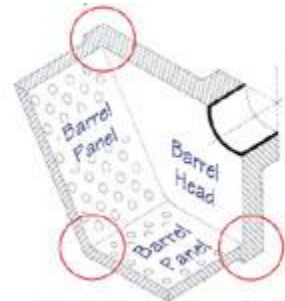
Door handles, door ribs and side ribs incorporate Steel-Core® construction, eliminating warping and parts loss while enhancing overall durability. Steel-Core® encapsulated reinforcing provides superior strength and extended service life to every Singleton production barrel.

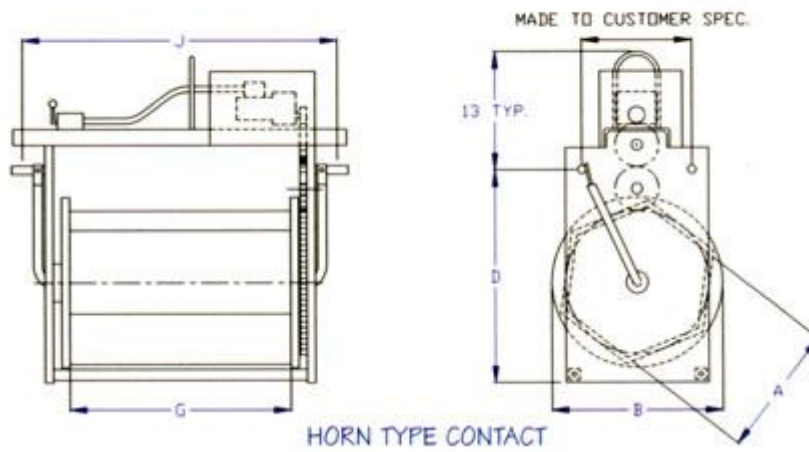
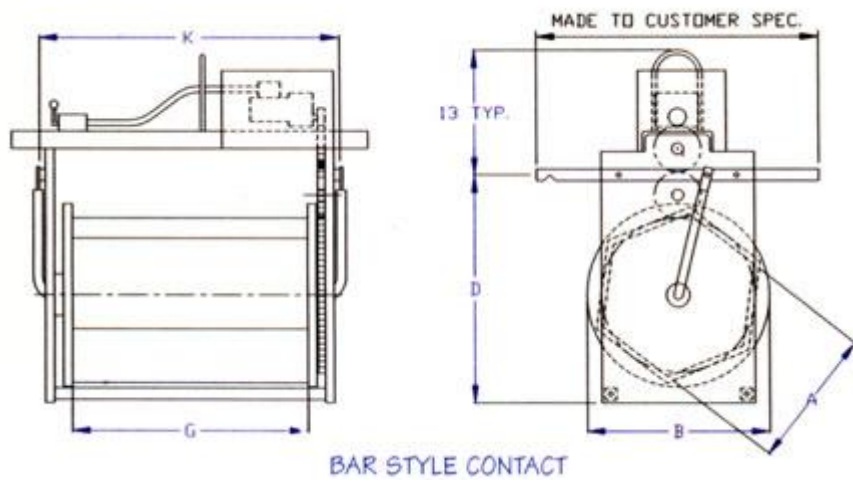
## Poly-Ripple® Panel Interior:

Poly-Ripple® barrel panels have a series of parallel grooves over the entire length of the interior surfaces. Poly-Ripple® is an exclusive feature of all Singleton production plating barrels. Poly-Ripple® promotes material tumbling, eliminates nesting, increases current flow to the load, allows faster draining, faster drying and less drag-out.



- † Self-lubricating gears and separate hubs, attached with alloy fasteners maximize serviceability
- † 110 VAC single phase, integral motors
- † Variable speed DC drives or air driven units are optional





Portable Barrel Sizes

A	G					
	8	10	12	16	18	20
6	x	-	x	x	-	x
8	x	x	x	x	x	x
10	x	x	x	x	x	x
12	-	-	x	x	x	x